

# Corn Cob Laboratory Bedding

**BioCOB** is dedicated in bringing you the best laboratory animal bedding that uses the finest corncob to produce a premium product. With stringent factory processes and quality control, only the best corn cob will reach your laboratory.



- Biodegradable
- Non Toxic
- Inert
- Adsorbent-holding up to 4X its weight of Fluid
- Available in various uniform sizes
- Tough resilient and durable

Highly adsorbent and help eliminate odors. It won't stick or cling to cages or pens, allowing for easy clean-up. All natural corn product.



## Corn Cob Material



Maize is a ubiquitous agricultural plant. Although the corn is the main product, the plant offers other parts that can be of major interest for industrial utilization. Those parts that are usually not removed from the fields come in considerable mass: leaves, stalks and cobs left on the fields alone amounted to more than 500.000 metric tons in the state of Styria. This not utilized material offers an interesting and valuable source for the production of various manufactured goods.

These materials are subsequently optimized for the following functions:

- adsorptive agent in hygienic applications, especially for pets
- adsorptive agent for oil on solid ground and soil in disaster control and cleaning application
- adsorptive agent for oil on water in disaster control

Utilization of agrarian residues like corn cobs offers on the one hand possibilities for the development of a decentralized process industry. The development of products for ecologically sensitive applications from renewable resources offers advantages in terms of reduced pressures on the environment.

Products from corn cob granulate may be used as adsorptive agents for as diverse media as water and odors or even cations. Corn cob granulate is inert and not toxic and can therefore be disposed of with relative ease.



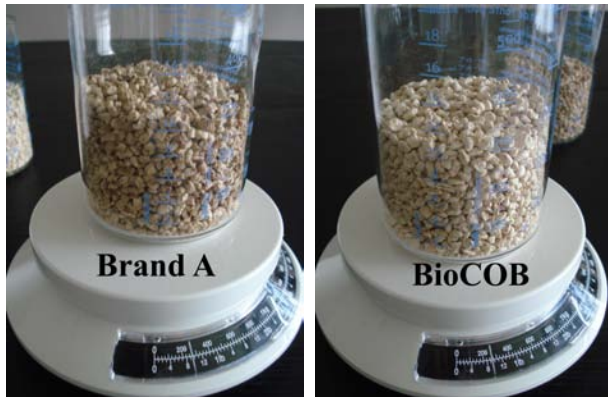
In practical tests it could be confirmed that corn cob granulate:

- is suitable for utilization as an adsorptive material. This applies to a granulate fraction from 0,3-2 mm.
- is very suitable in pet hygienic applications (e.g. laboratory bedding material). This applies to granulate fractions of 3-5 mm for small rodents and 3,5 to 8 mm for bigger rodents. Adsorptive capacity is approximately 1 to 1,3 kg water per kg granulate.

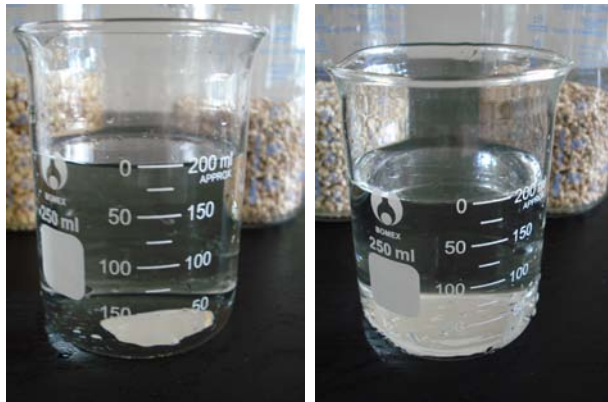


## BioCOB Adsorbancy Test

1. Measuring the same amount of Corn Cob in the beaker.



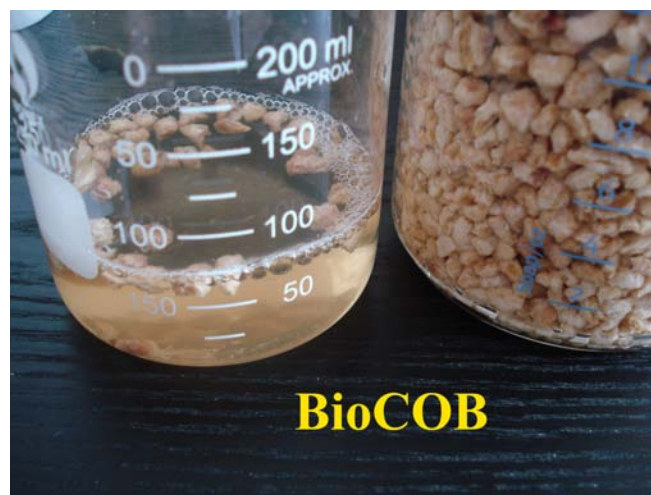
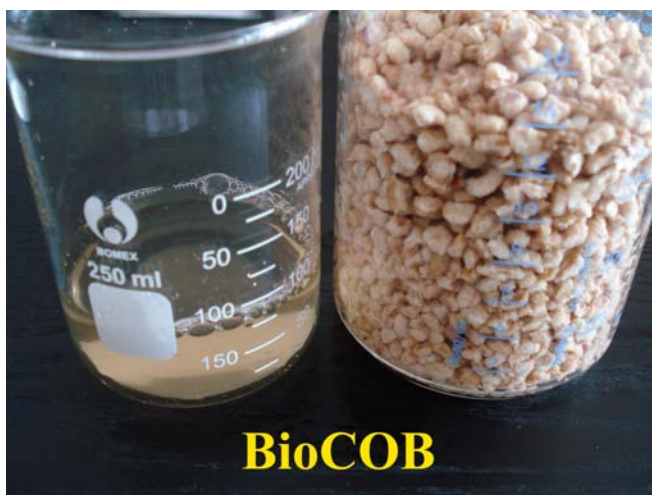
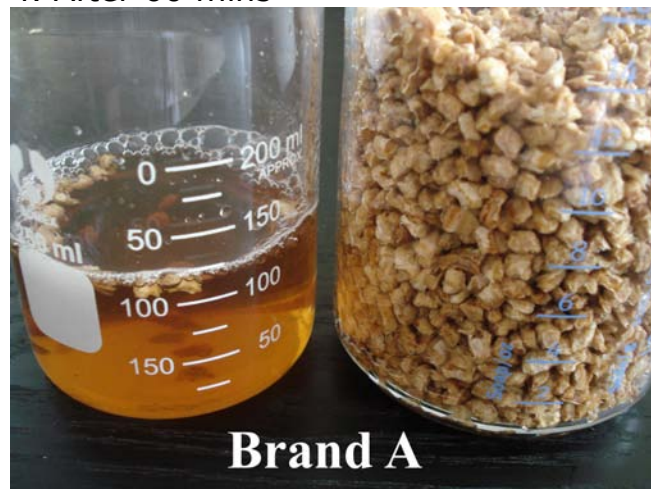
2. Pouring 200ml into each beaker for the corn cob to adsorb.



3. After 30 mins



4. After 60 mins



## BioCOB SGS Test for Pesticide and Heavy Metal



**Test Report** No. 10155524/09 Date: April 3, 2009 Page 1 of 3

Biomedical Research Consultants Pte Ltd  
27 Cantonment Road  
Singapore 089745

The following sample(s) was/were submitted and identified by/on behalf of the client as:

Sample Description : Biocob corn cob animal bedding  
Sample Receiving Date : 27 March 2009  
Testing Period : 28 March 2009 to 03 April 2009

Test Result(s) : Please refer to next page(s).

Signed for and on behalf of  
SGS Testing & Control Services Singapore Pte Ltd



Y.C. Tham  
Laboratory Manager

Test Location: 20 Ayer Rajah Crescent, #07-05, Singapore 139944  
This document is issued by the Company under its General Conditions of Service accessible at [http://www.sgs.com/terms\\_and\\_conditions.htm](http://www.sgs.com/terms_and_conditions.htm).  
Attention is drawn to the limitation of liability, indemnification and jurisdiction issues defined therein. Any holder of this document is advised that information contained herein reflects the Company's findings at the time of its observation only and within the limits of Client's instructions, if any. The Company's sole responsibility is to its Client and this document does not constitute part of a transaction from exercising all their rights and obligations under the transaction documents. Any unauthorised alteration, forgery or falsification of the content or appearance of this document is unlawful and offenders may be prosecuted to the fullest extent of the law. *Unless otherwise stated the results shown in this test report refer only to the sample(s) tested and each sample(s) are retained for 30 days only. This document cannot be reproduced except in full, without prior approval of the Company.*  
SGS Testing & Control Services Singapore Pte Ltd | 20 Ayer Rajah Crescent #07-05 Singapore 139944 | +65 6379 5111 | +65 6777 2614 | [www.sgs.com](http://www.sgs.com)

Member of SGS Group



**Test Report** No. 10155524/09 Date: April 3, 2009 Page 2 of 3

**Test Results:**

Test Items	Method	LOD	Results	Units
<b>* Pesticides Organochlorine</b>				
In house Method Based on Steinwandler H.1982.Fresenius Z.Anal. Chem No.1155				
-alpha-BHC		0.002	Not detected	mg/kg
-beta-BHC		0.002	Not detected	mg/kg
-gamma-BHC (Lindane)		0.002	Not detected	mg/kg
-delta-BHC		0.002	Not detected	mg/kg
-Heptachlor		0.002	Not detected	mg/kg
-Aldrin		0.002	Not detected	mg/kg
-Methoxychlor		0.002	Not detected	mg/kg
-gamma-Chlordane		0.002	Not detected	mg/kg
-Endosulfan I		0.002	Not detected	mg/kg
-alpha-chlordane		0.002	Not detected	mg/kg
-p,p'-DDE		0.002	Not detected	mg/kg
-Dieldrin		0.002	Not detected	mg/kg
-Endrin		0.002	Not detected	mg/kg
-Endosulfan II		0.002	Not detected	mg/kg
-p,p'-DDD (TDE)		0.002	Not detected	mg/kg
-Endrin aldehyde		0.002	Not detected	mg/kg
-Endosulfan sulfate		0.002	Not detected	mg/kg
-p,p'-DDT		0.002	Not detected	mg/kg
-Endrin Ketone		0.002	Not detected	mg/kg
-Methoxychlor		0.002	Not detected	mg/kg
-o,p'-DDT		0.002	Not detected	mg/kg
-Dibofol		0.002	Not detected	mg/kg
<b>* Pesticides Organophosphorus</b>				
In house Method Based on Steinwandler H.1980.Fresenius Z.Anal. Chem No.1156				
-chlorpyrifos		0.03	Not detected	mg/kg
-disulfoton		0.03	Not detected	mg/kg
-diazinon		0.03	Not detected	mg/kg
-ethion		0.03	Not detected	mg/kg
-terbufos		0.03	Not detected	mg/kg
-malathion		0.03	Not detected	mg/kg
-mevinphos		0.03	Not detected	mg/kg
-parathion ethyl		0.03	Not detected	mg/kg
-parathion methyl		0.03	Not detected	mg/kg

Test Location: 20 Ayer Rajah Crescent, #07-05, Singapore 139944  
This document is issued by the Company under its General Conditions of Service accessible at [http://www.sgs.com/terms\\_and\\_conditions.htm](http://www.sgs.com/terms_and_conditions.htm).  
Attention is drawn to the limitation of liability, indemnification and jurisdiction issues defined therein. Any holder of this document is advised that information contained herein reflects the Company's findings at the time of its observation only and within the limits of Client's instructions, if any. The Company's sole responsibility is to its Client and this document does not constitute part of a transaction from exercising all their rights and obligations under the transaction documents. Any unauthorised alteration, forgery or falsification of the content or appearance of this document is unlawful and offenders may be prosecuted to the fullest extent of the law. *Unless otherwise stated the results shown in this test report refer only to the sample(s) tested and each sample(s) are retained for 30 days only. This document cannot be reproduced except in full, without prior approval of the Company.*  
SGS Testing & Control Services Singapore Pte Ltd | 20 Ayer Rajah Crescent #07-05 Singapore 139944 | +65 6379 5111 | +65 6777 2614 | [www.sgs.com](http://www.sgs.com)

Member of SGS Group



**Test Report** No. 10155524/09 Date: April 3, 2009 Page 3 of 3

Test Items	Method	LOD	Results	Units
-pirimiphos ethyl		0.03	Not detected	mg/kg
-pimiphos methyl		0.03	Not detected	mg/kg
-phorate		0.03	Not detected	mg/kg
-acrinphos ethyl		0.03	Not detected	mg/kg
-chlorpyrifos methyl		0.03	Not detected	mg/kg
-chlorfenvinphos		0.03	Not detected	mg/kg
-dimethoate		0.03	Not detected	mg/kg
-EPR		0.03	Not detected	mg/kg
-ethionphos		0.03	Not detected	mg/kg
-methamidophos		0.03	Not detected	mg/kg
-phosalone		0.03	Not detected	mg/kg
-prothiofos		0.03	Not detected	mg/kg
-prothiophos		0.03	Not detected	mg/kg
-triazophos		0.03	Not detected	mg/kg
-acaphate		0.03	Not detected	mg/kg
-acrinphos methyl		0.03	Not detected	mg/kg
-dichlorvos		0.03	Not detected	mg/kg
-diclofopros		0.03	Not detected	mg/kg
-monocrotophos		0.03	Not detected	mg/kg
-omethoate		0.03	Not detected	mg/kg
-phosphamidon		0.03	Not detected	mg/kg
Arsenic (As)	Based on AOAC (2005) method 999.10	0.02	Not detected	mg/kg
Lead (Pb)	In house method : Based on AOAC (2005) method 909.1B	0.15	Not detected	mg/kg
Cadmium (Cd)	In house method : Based on AOAC (2005) method 909.1B	0.03	Not detected	mg/kg
Mercury (Hg)	In-house method Based on USEPA 7473 and ASTM D 6722	0.004	Not detected	mg/kg

Remarks: (1) LOD = "Limit of Detection Limit"  
(2) Less than = Lower than LOQ "Limit of Quantitation"

\* Tested by an SGS Lab ( Ref: 1619213)

\*\*\*\*\*End of report\*\*\*\*\*

**BioCob**

27 Cantonment Road, Singapore 089745

<http://www.biocob.com> Email: [Sales@biocob.com](mailto:Sales@biocob.com) Tel: +65 90 257 258